

THE NEXT GREEN INNOVATION

Green 16/18™



- **4-IN-1 DIGITAL** [PANO | CEPH | CBCT | MODEL]
- **MULTI FOV SELECTION**
- **GREEN SCAN TIME**
- **LOW DOSE AND HIGH IMAGE QUALITY**
- **THE ART-V**
- **3D SCANNING FOR MODEL**

THE ADVANCED 4-IN-1 DIGITAL X-RAY IMAGING SYSTEM


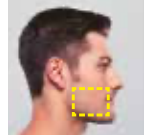
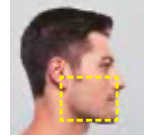
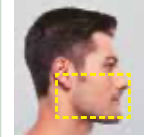
The Green 16/18 is an advanced 4-in-1 digital x-ray imaging system that incorporates PANO, CEPH (Optional), CBCT, and MODEL Scan.

It provides high quality images with lower radiation by combining image processing and accumulated experience in dental imaging from Vatech. This will improve your diagnostic accuracy with increased treatment planning and patient satisfaction.



MULTI FOV SELECTION

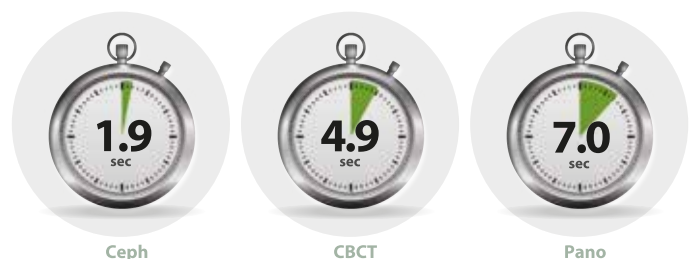
The Green 16/18 offers a range of selectable fields of view. The Multi FOV enables the user to select the optimal FOV mode and minimizes exposure to areas not in the region of interest. Select the proper FOV size among 18x10, 16x9, 13x10, 12x9, 8x9, and 5x5 based on a particular diagnostic need. It covers the full arch region, sinus, and left/right TMJ and it suits most oral surgery cases as well as multiple implant surgeries.

| Endo & Single implant | Arch | Dual Arch | Sinus & TMJ |
|---|---|---|---|
| 5x5 | 8x9 | 12x9 / 13x10 | 16x9 / 18x10 |
|  |  |  |  |
| Optimal size to cover 3~4 teeth through capturing ROI | Basic FOV size & select a left or right or center arch | Suitable for multiple implant surgeries | Optimal size for sinus & TMJ diagnosis |

GREEN SCAN TIME

The Green 16/18 minimizes motion artifact and enables faster workflow due to its scan time.

It produces superb diagnostic images, which will be a source of pride for any dental practice. Focusing on the highest quality of patient care, Vatech strives to improve the health and safety of your patients.



Ceph

CBCT

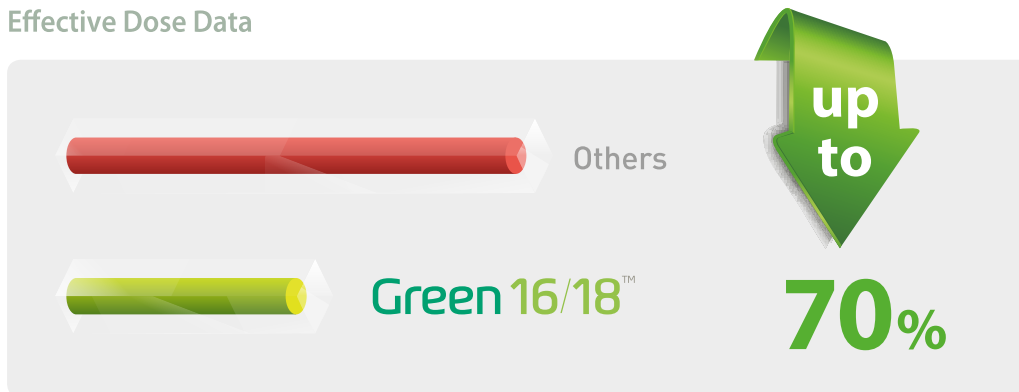
Pano



LOW DOSE AND HIGH IMAGE QUALITY

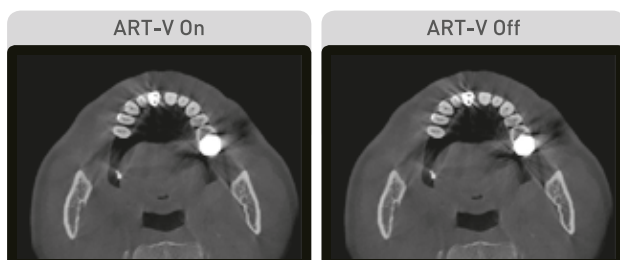
What has been developed at Vatech breaks many conventions in dental radiography. It was always believed that with low radiation comes inferior image quality, which renders it useless in clinical diagnosis. However, the Green 16/18 provides clinically diagnosable x-ray scans at a low x-ray dosage. With low dose radiography, achieving clinically diagnosable image quality is the new golden-standard.

Effective Dose Data



THE ART-V

Metal artifact hinders visualization and naturally reduces diagnostic confidence. Clear images cause less stress and provide more confidence which lead to accurate diagnosis for implant planning.

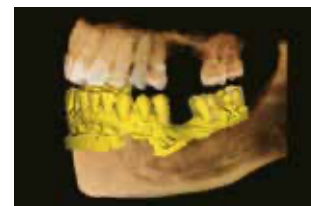


*ART-V is the new name of Vatech's MAR function. (Artifact Reduction Technology of Vatech)

3D SCANNING FOR MODEL

3D model scan enables users to store plasters as digital models.

DIGITIZED ONE-STOP CLINIC



CAD/CAM integration

- Sufficient level of detail for surgical guide design



Specially designed Jig

- Stable protection from partial model to full model

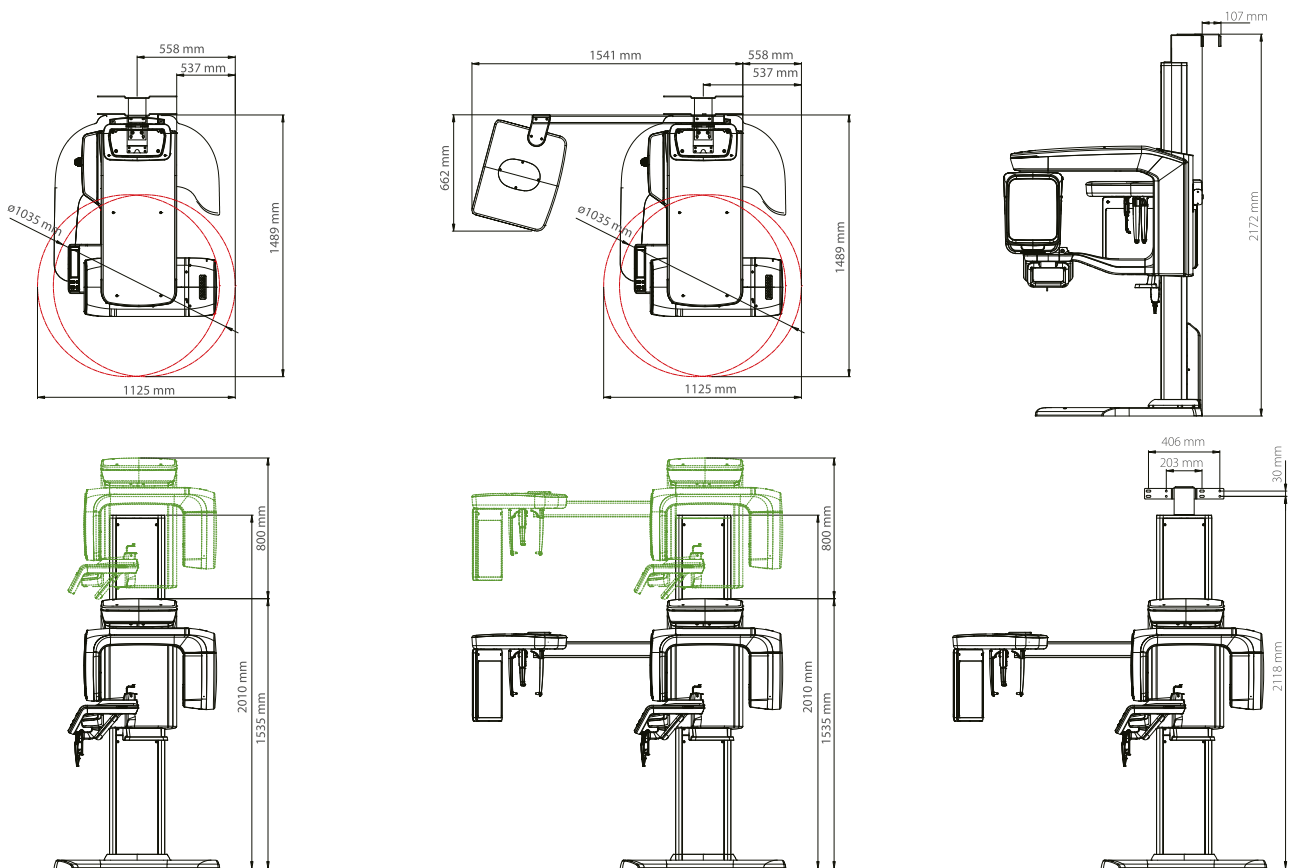
*3D scanning for Plaster Cast with FOV 8x9 (cm)

SPECIFICATIONS [Green 16/18: **PHT-65LHS**]

| | | |
|------------------------|---|--|
| Function | CT + Pano + Ceph + Model Scan | |
| Focal Spot Size | 0.5 mm (IEC60336) | |
| CT FOV Size | 16x9 cm : Multi [5x5 / 8x9 / 12x9 / 16x9 cm] 18x10 cm : Multi [5x5 / 8x9 / 13x10 / 18x10 cm] | |
| Voxel Size | 5x5 | 0.08 mm / 0.12 mm |
| | 8x9 | 0.12 mm / 0.2 mm |
| | 12x9 | 0.2 mm / 0.3 mm |
| | 13x10 | 0.2 mm / 0.3 mm |
| | 16x9 | 0.2 mm / 0.3 mm |
| | 18x10 | 0.2 mm / 0.3 mm |
| Scan Time | Pano | 14.1 sec / 7.0 sec |
| | Ceph | 3.9 sec / 1.9 sec |
| | CBCT | 9.0 sec (12x9 - 18x10) / 4.9 sec (5x5 - 8x9) |
| Gray Scale | 14 Bit | |
| Tube Voltage / Current | 60 - 99 kVp / 4 - 16 mA | |
| Weight | Without CEPH unit | 134 kg - without the Base |
| | | 187 kg - with the Base |
| Dimensions | With CEPH unit | 159 kg - without the Base |
| | | 212 kg - with the Base |
| Dimensions | Without CEPH unit | 1125 mm (L) x 1489 mm (W) x 2335 mm (H) |
| | With CEPH unit | 1874 mm (L) x 1489 mm (W) x 2335 mm (H) |

*The specifications are subject to change without prior notice.

DIMENSIONS [Unit: mm]



***An additional 3 inches (76.2 mm) of space is required behind the unit for wall mount bracket installation (mandatory unless there is a base mount installation).**