

PSPiX²



www.acteongroup.com

Document non contractuel - Ref. 707106 L / 09/2021 - Copyright ACTEON 2021. All rights reserved. No information or part of this document may be reproduced or transmitted in any form whatsoever without the prior consent of ACTEON.

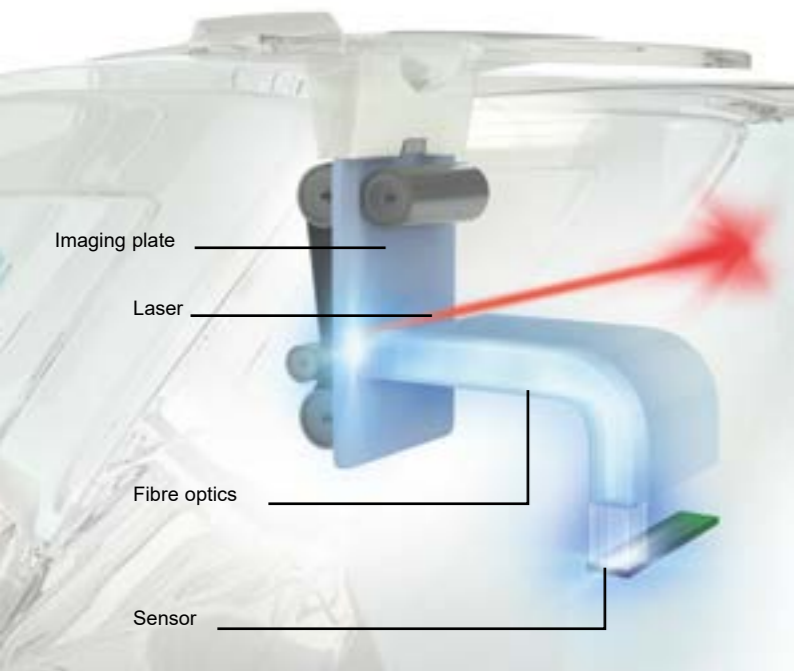
The first simple
and intuitive
personal
imaging plate
scanner

For further information, please contact:

SOPRO S.A. | A company of ACTEON Group
ZAC Athélia IV | Avenue des Genévriers | 13705 LA CIOTAT cedex | FRANCE
Tél + 33 (0) 442 98 01 01 | Fax + 33 (0) 442 71 76 90
E-mail : info@sopro.acteongroup.com | www.acteongroup.com



STRIKING CONTRAST FOR AN ACCURATE DIAGNOSIS

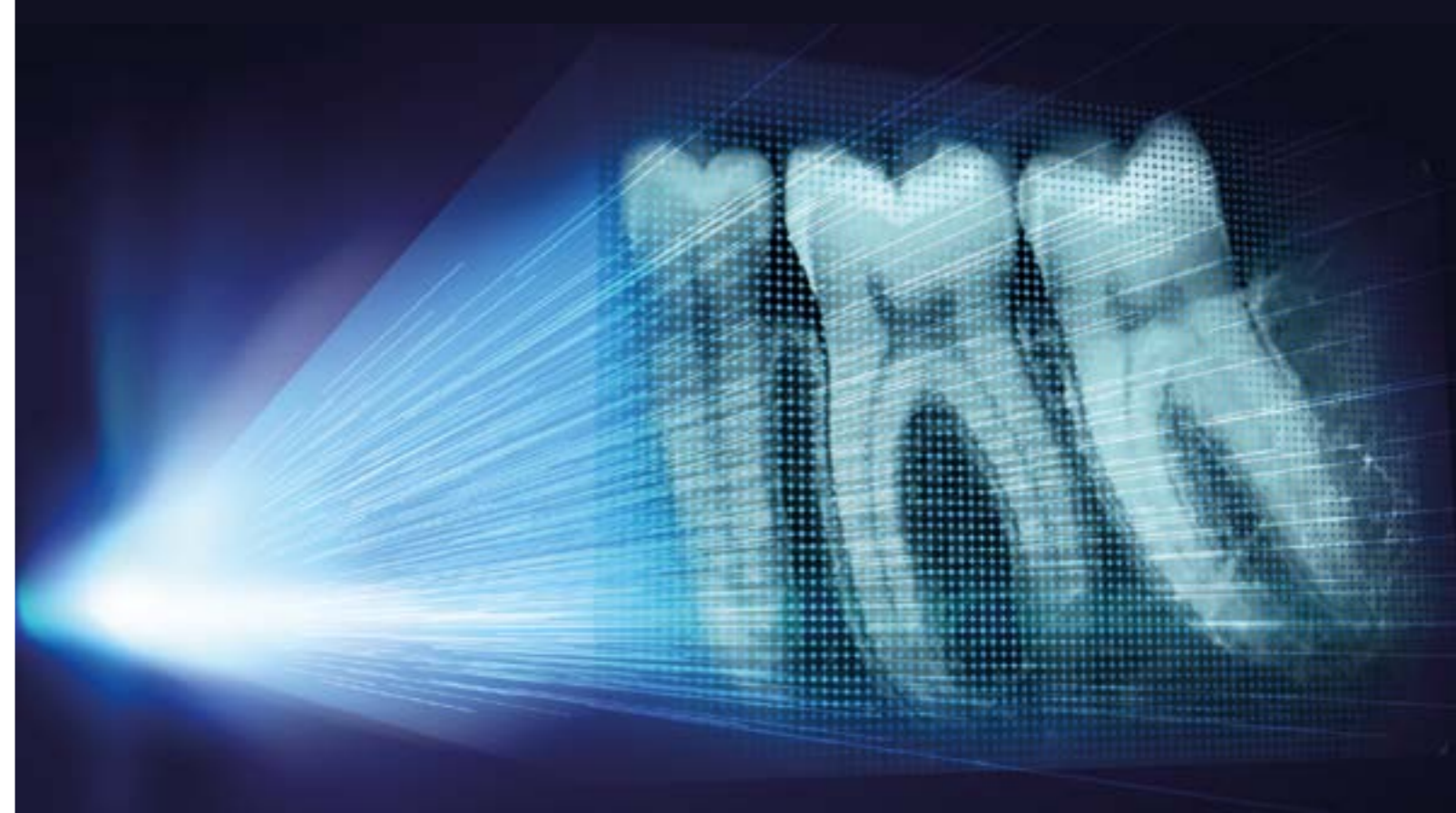


MORE INVENTIVE

Better differentiation of the dental tissue

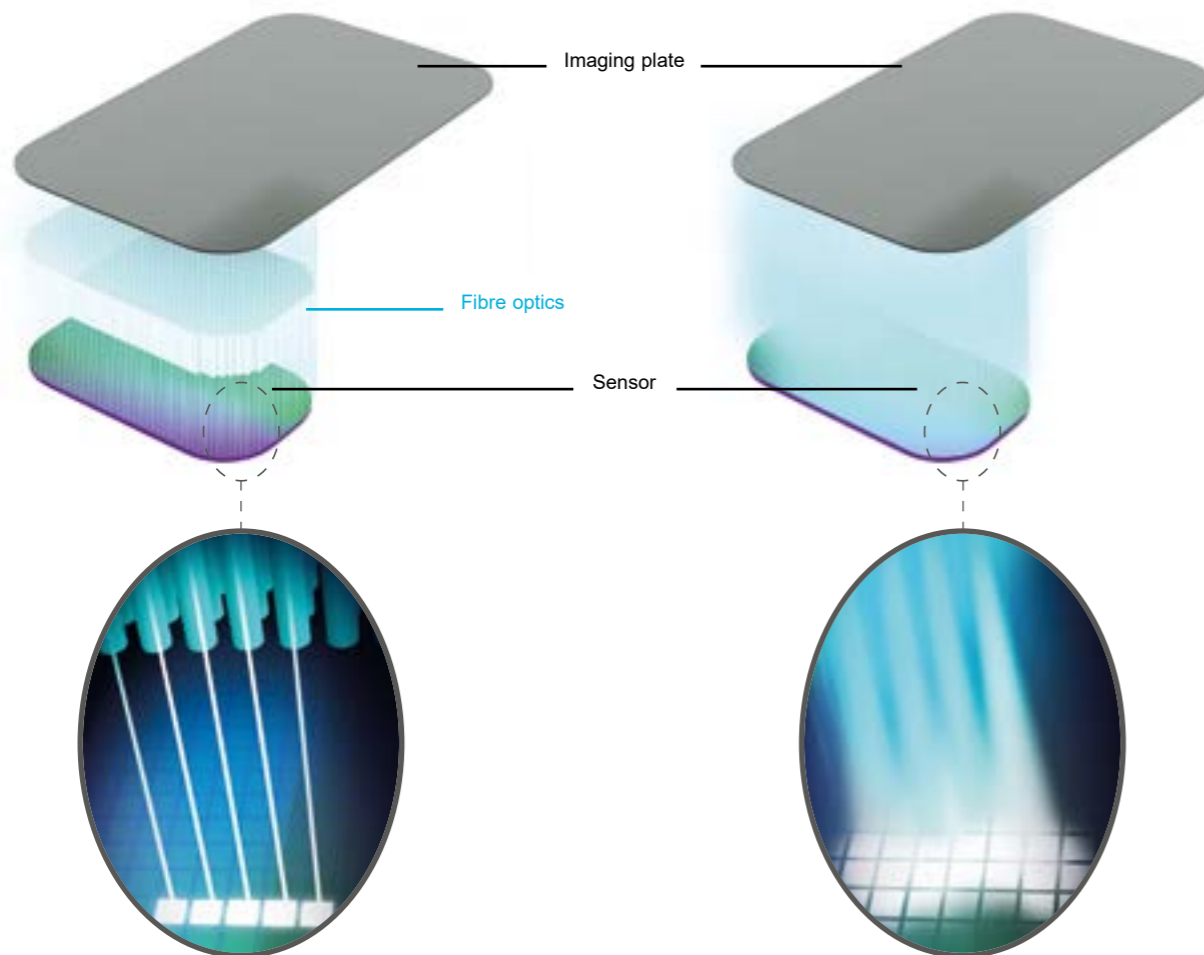
PSPIX² surpasses the limits of radiological examinations by offering **greater differentiation of dental tissue.**

This technological achievement is called **FIBER2PIXEL®**



WITH FIBRE - FIBER2PIXEL®

WITHOUT FIBRE



2 FIBER PIXEL

Differentiation of the dental tissue

FIBER2PIXEL® technology is based on the use of **broad spectrum optical microfibres** for the guided transmission of photon emissions in order to provide **highly contrasted images.**

LESS INVASIVE

A more reliable diagnosis

The different tooth anatomic structures, such as the bone, roots, pulp... are highlighted with **extreme precision** on the image.

Your diagnosis is **faster** and **more accurate!**



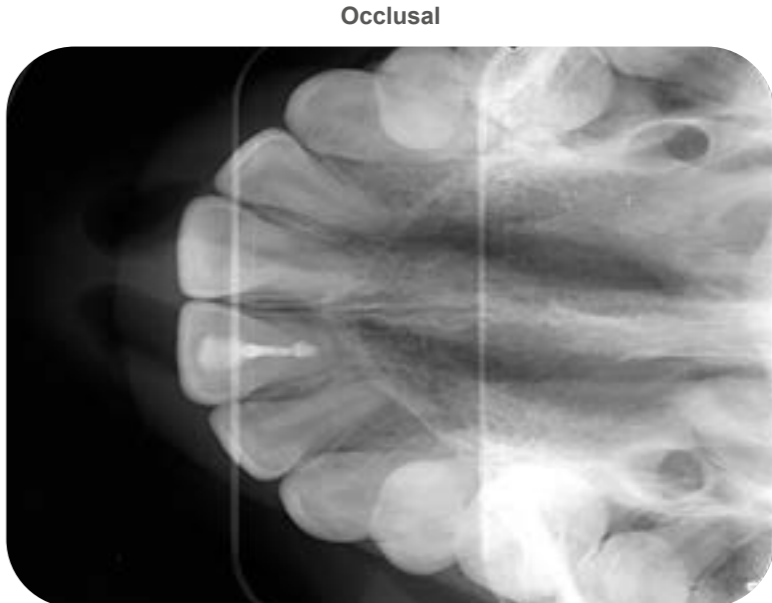
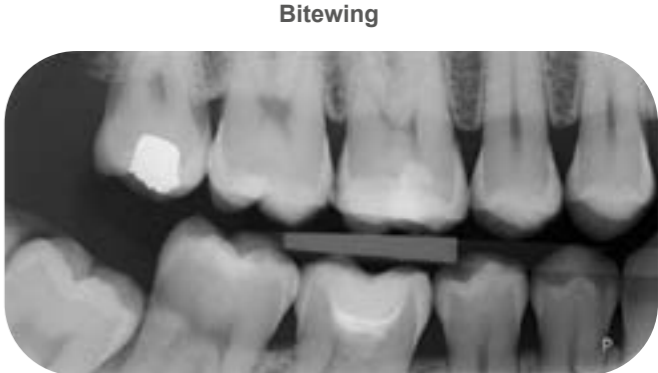
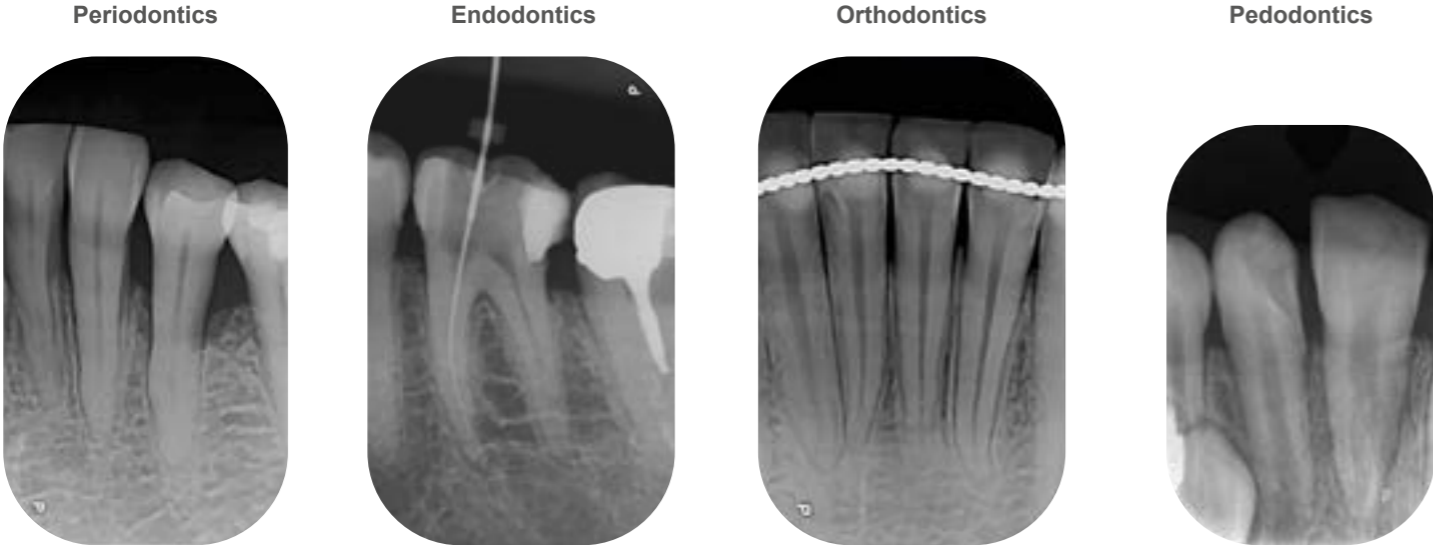
PERFECTLY ADAPTED TO ALL CLINICAL APPLICATIONS

HIGH-QUALITY IMAGES

With **FIBER2PIXEL®** technology, PSPIX² provides **accurate images** and **striking contrast** to ensure a **reliable diagnosis**.

DESIGNED FOR YOUR PRACTICE

Various sizes are available depending on **patient morphology** and **clinical applications**.



ACTEON IMAGING SUITE

THE NEW GENERATION OF IMAGING SOFTWARE

Extremely user-friendly, ACTEON Imaging Suite software offers **advanced X-ray image processing tools**.
ACTEON Imaging Suite is delivered with each PSPIX² and is compatible Windows® and Mac®.



A SCANNER FOR MYSELF

ACTEON® has created the first personal imaging plate scanner on the market

- You can get my images immediatly
- You do not have to wait for your turn

SHOOT & SCAN

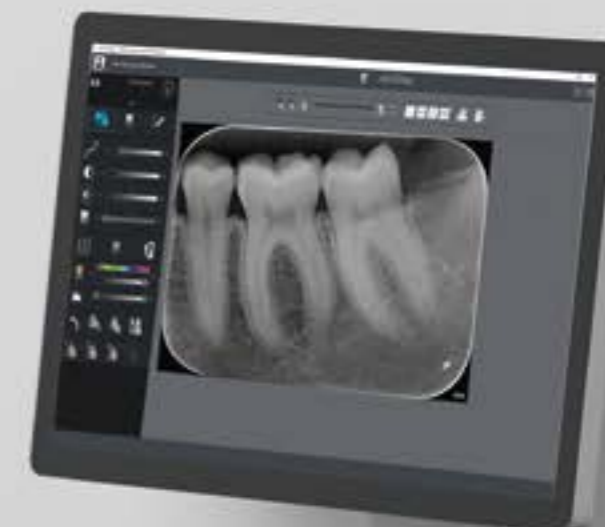
With PSPIX² chairside, you significantly save time:

- You are the single-user of the scanner
- You do not need to move to another room to scan your images
- You get your images in a few seconds

You are therefore more efficient and more dedicated to your patients' care.

The PSPIX² is

AFFORDABLE, you can now equip every operatory chair side
INTUITIVE, learning to use it is instantaneous
SMALL, it takes up a minimal amount of space
ELEGANT, it will enhance your dental practice



A SIMPLER AND MORE INTUITIVE SCANNER

PSPIX² IS SO INTUITIVE THAT IT HAS NEVER BEEN SO EASY TO SCAN AN IMAGE

COMPACT SIZE

- Created with cutting edge technology and design, the PSPIX² is the smallest and most compact PSP scanner on the market.

SO SIMPLE

- The large colour touchscreen provides intuitive indications for quick and easy use.

MODERN DESIGN

- With an elegant design, the PSPIX² fits perfectly within your dental practice.

TRUE INTELLIGENCE

- Workflow has never been so smooth and efficient, through its outstanding intellectual ability. A real evolution in your working practice!



OUTSTANDING COMFORT FOR YOU AND YOUR PATIENTS



FLEXIBILITY

Thinner and more flexible, the PSPIX² imaging plates are easy to use and provide outstanding patient comfort.



ADAPTABILITY

Various sizes are available to suit the patient's morphology and your clinical needs.

"Patients presenting to the practice will have differing tolerances to having films or imaging plates placed in their mouths. Strong tongue posturing, gag reflexes, arch shape, adult or child, etc will all mean that one film size will not be adequate to take the different types of intra-oral x-rays required. We have different PSPIX² imaging plate sizes available in all our surgeries, and this is essential."

Dr Bhupinder DAWETT
United Kingdom
Dental Surgeon



Dr Todd SNYDER
United States
Dental Surgeon, DDS

"The PSPIX² has been a welcome addition to my dental practice. It has been an investment that has paid for itself over and over again by increasing workflow and patient education."

"The use of PSPIX² has become vital in my daily practice. The imaging plates size 0 and 1 allow me to get quality X-rays with children, even at a very young age. In fact, unlike a traditional rigid sensor, the imaging plates are flexible and easy to hold in the mouth, providing greater comfort and preventing any stress."

Dr Matthias PISAPIA
France
Dental Surgeon

* Computer reconstruction of size 4 image from three size 3 imaging plates.

OPTIMAL PROTECTION

PSPIX² EXCEEDS YOUR EXPECTATIONS IN TERMS OF HYGIENE

● AUTOCLAVABILITY

Only PSPIX² provides such a high level of protection.

- PSPIX² has removable parts which comply with thermal washer-disinfectors, the latest disinfection standards.
- PSPIX² offers unique autoclavable parts* to eliminate risk of infection.

● OPTIMAL HYGIENE BARRIER

Hygiene is at the core of each operating step of PSPIX².

- Hygiene bags and covers ensure high degree of protection against cross-contamination.
- The touchscreen stylus also allows a hygienic use.



*Optional autoclavable parts.



YOU CAN ALSO SHARE IT

PSPIX² has also been designed to be shared by multiple users.

CLICK & SCAN

Save time with the new "Click and Scan" concept of PSPIX², the simplest way to gain efficiency.

Select your workstation on the touchscreen, insert your imaging plate and let PSPIX² do the rest...

PSPIX² can also be controlled from your workstation.

FULLY AUTOMATED PROCESS

- **AUTO-ACCESS:** The door only opens when the imaging plate is inserted.
- **AUTO-DETECT:** PSPIX² automatically detects the size of the inserted imaging plate.
- **AUTO-SCAN:** PSPIX² scans and optimizes the image before displaying it into the right workstation.
- **AUTO-EJECT:** The imaging plate is automatically erased and ejected for an immediate reuse.
- **ECO-MODE:** PSPIX² automatically switches to economic mode when not in use for an extended period of time.

LET THE LIGHT GUIDE YOU...

Check the status of PSPIX² at a quick glance!



Blue: Available



Purple: Scanning



Yellow: Booked



TECHNICAL SPECIFICATIONS

System

Resolution.....	20 lp/mm
Scan Time (fast mode).....	1,6s - 2,7s
Scan Time (high definition mode).....	2,1s - 3,6s
Connection	Ethernet RJ-45
Dimensions.....	L. 154 x D. 204 x H. 193 mm
Weight	2,6 kg
Operating voltage	100 - 240V ~ 50 - 60 Hz

Windows® minimum configuration required

- Operating system.....Windows® 7
- Processor
- RAM
- Hard disk.....
- USB ports.....
- Graphic card.....
- USB Chipset
- Screen resolution
- Ethernet board

Mac® minimum configuration required

- Computer
- Operating system.....
- Processor
- RAM
- Ethernet board

IMAGING PLATES

Dimensions IP Size 0	22 x 35 mm
Dimensions IP Size 1	24 x 40 mm
Dimensions IP Size 2	31 x 41 mm
Dimensions IP Size 3	27 x 54 mm
Dimensions IP Size 4 (3 x IP Size 3).....	69 x 54 mm

Windows® recommended configuration

- Operating system.....Windows® 10
- Processor.....
- Ram:.....
- Hard disk.....
- USB ports.....
- Graphic card.....
- USB Chipset
- Screen resolution
- Ethernet board

Mac® recommended configuration

- Computer
- Operating system.....
- Processor
- RAM
- Ethernet board

For Yosemite and El Capitan operating systems, a Mac computer from 2013 or later is required.

The medical device for dental care PSPIX² is of class I and and manufactured by SOPRO. ERLM is of class IIa and manufactured by SOPRO notified body GMED CE0459. AIS is of class IIb and manufactured by DE GOTZEN notified body IMQ CE0051. This medical device is not refunded by health insurance organizations. Read carefully the instructions on the labelling before use.

PSPIX® and SOPRO® are registered trademarks of SOPRO.
"All other trademarks cited herein are the property of their respective owners"



